

Description and assembly instruction for the Zoo Animal Feeder 1

We are glad that you decided for the our Feeder. You keep the equipment premounted, so that it can be used at shortly.

1. Assembly of the automatic feeder

The best place to mount the Feeder is at the external wall of the box. Than fix the feeder at the wall, and also a rain water pipe (from the building market), so that the fodder can fall due the pipe into the trough. Pay attention that the pipe is mounted with gape.

2. Control an Power-Supply Box

- Open the box.
- (a) Than fix the wire form the Feeder together with the wire form the power-supply. Have look at the pic. in housing.

Before any maintenance or repair work power supply must be pulled out of the socket.

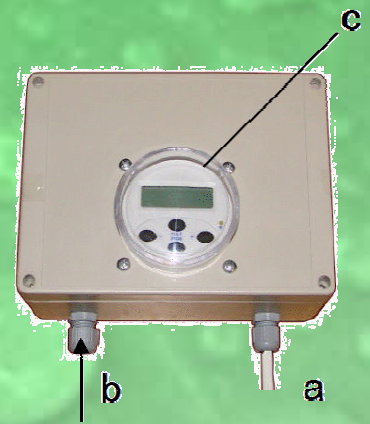
The equipment should be attached only by the specialist .

- (b) Unscrew the nut/mother of the cable screw connection, so that you can pass through the cable with the 2 wires which is pre-mounted on the feeder.

Now connect the end of the wire with the lustre terminal and close the lid of the of the power supply box with the screws which you get with the box.

Attention: The **red Wire** from the control must absolutely be connected with the **violet wire** from the feeder otherwise the conveyer screw turns in the wrong direction and the feeder can be damaged. (see backside).

- (c) Timer: is mounted in the box from the power-supply or directly in the feeder. please read the separate manuals for the timer



Consider please

After every repair work or changes from the cables or wire, test with a small quantity food whether the conveyer screw runs correctly around. The automat could be otherwise damaged

Attention

Never grip with your hands or other things into the container from the attached and ready feeder.

Unplug the power supply plug before any cleaning and maintenance work.

